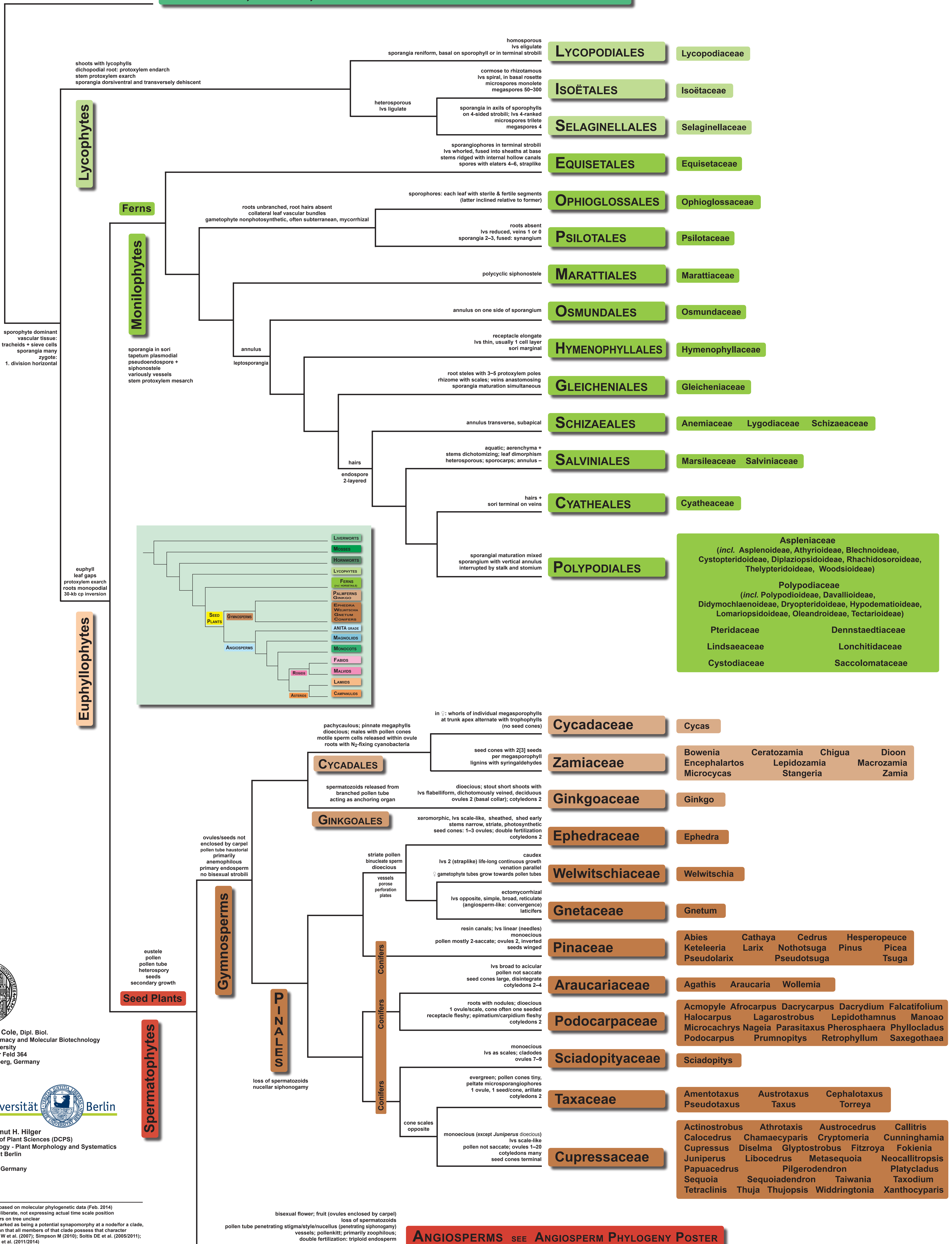


TRACHEOPHYTE PHYLOGENY

Vascular Plants – Systematics and Characteristics

HORNWORTS, MOSSES, LIVERWORTS SEE "BRYOPHYTE" PHYLOGENY POSTER



Theodor C. H. Cole, Dipl. Biol.
Institute of Pharmacy and Molecular Biotechnology
Heidelberg University
Im Neuenheimer Feld 364
D-69120 Heidelberg, Germany

Freie Universität Berlin
Prof. Dr. Hartmut H. Hilger
Dahlem Centre of Plant Sciences (DCPS)
Institute of Biology - Plant Morphology and Systematics
Freie Universität Berlin
Altensteinstr. 6
D-14195 Berlin, Germany

• hypothetical tree based on molecular phylogenetic data (Feb. 2014)
• branch lengths deliberate, not expressing actual time scale position
• if a character is marked as being a potential synapomorphy at a node for a clade, this does not mean that all members of that clade possess that character
• References: Judd W et al. (2007); Simpson M (2010); Soltis DE et al. (2009/2011); Christenhusz M.J.M. et al. (2011/2014)
see also: Stevens PF (2011) APweb – www.mobot.org/MOBOT/research/APweb

